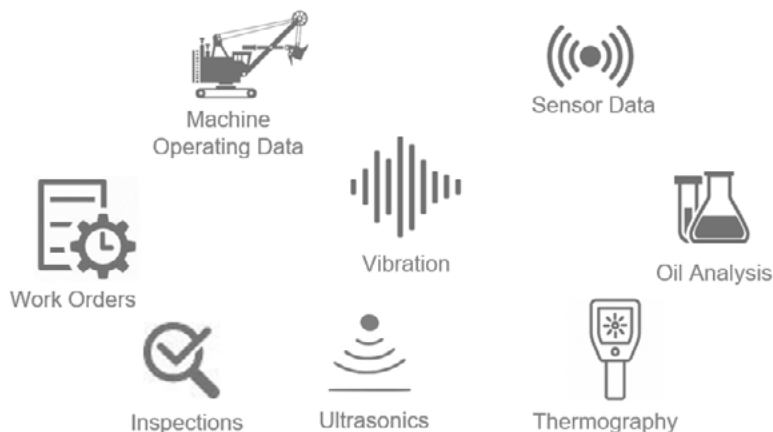




How to Optimize your Maintenance Practices



Have you ever taken a bite out of an apple and realized it wasn't great on the inside? The outside was perfect, but the inside tells a different story.

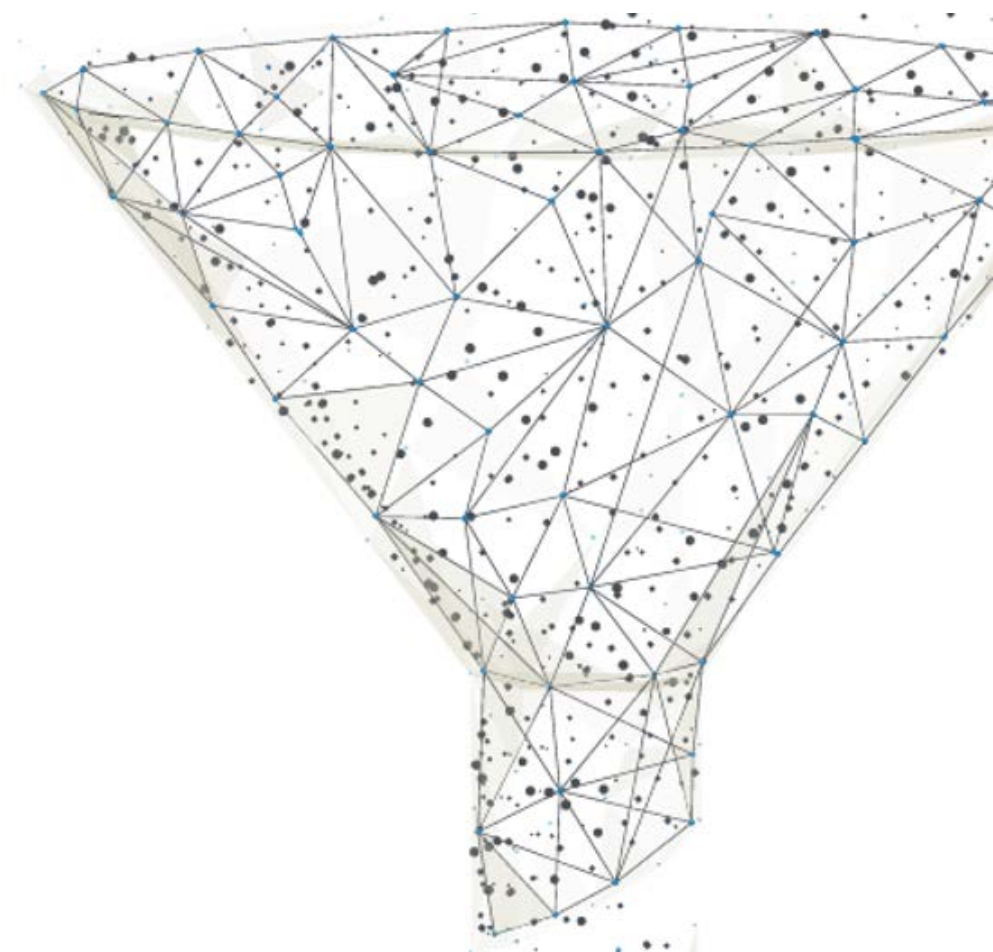
The true condition of your equipment can be just as much of a surprise and can taste equally as sour.

Maintenance teams battle to understand the true condition of their equipment making it difficult to determine a course of action, particularly regarding major maintenance events.

Following the manufacturer's preventive maintenance schedule does not prevent failure, nor does it minimize cost or maximize equipment availability.

DINGO's mission is to help asset intensive industries around the world to optimize their maintenance practices, saving time and money.

TRAKKA's unique Condition Intelligence™ Module, combined with guidance from our Condition Intelligence experts, facilitates automatic and customized analysis of your asset condition while enabling powerful interpretation of your data, preventing equipment failure.



TRAKKA

Find out more about our Condition Intelligence Module [here](#)